



EQUIA from GC.

The solution
for aesthetic
bulk fill
posterior restorations.

A new standard in restorative technology
that offers you an additional option to meet
all your patient's expectations.

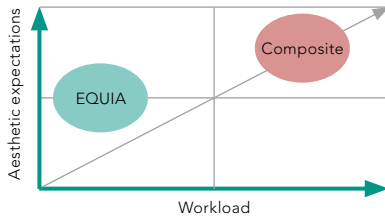
GC

The search for an aesthetic and economical posterior restorative material is finally over.

EQUIA is a unique restorative system which unites a new generation of glass particles (EQUIA Fil Capsules) and a highly-filled resin coating material (EQUIA Coat). EQUIA combines quick and easy handling with perfect physical properties and incomparable aesthetics.

GC's EQUIA widens your posterior aesthetic restorative options to fulfil your patients' expectations.

Posterior Aesthetic Restorative Options



Easy

With its high moisture tolerance, almost no shrinkage stress, and no reported post operative tooth sensitivity, EQUIA makes a hassle-free one-step bulk placement in large cavities a reality – without the use of time consuming, messy and complicated bonding and etching procedures.



BULK PLACEMENT

Dr. J. Zalba, Spain

Quick

The new generation glass particles in EQUIA Fil offer a higher reactivity which leads to a shortened net setting time.

The superior moisture tolerance of EQUIA Fil makes use of a rubber dam optional and enables quick and efficient placement of restorations. EQUIA is also packable and non-sticky for easy placement.

Only a single application of EQUIA Coat, as a final step, creates perfect smoothness and a natural gloss. As a result, there is no need for any complex finishing and polishing.

The average time taken to complete a two-surface restoration with different types of restorative materials.

Total time	EQUIA	Amalgam	Composite
In minutes	17.24	20.50	25.86
In percentage	100 %	118.91 %	150 %

EQUIA gives a substantial 50 % time advantage over a standard two-surface composite restoration and approximately a 20 % advantage over amalgam.

Adapted from: 'Materialien zur Beanspruchungsdauer und Beanspruchungshöhe ausgewählter Behandlungsanlässe', Prof. Dr. K.H. Friedl, Deutscher Zahnärzte Verlag DÄV 2002.

Aesthetic

Being the first true environmentally friendly, bio-mimetic and economical solution, EQUIA offers natural optical characteristics which makes it a perfect alternative for your posterior restorations



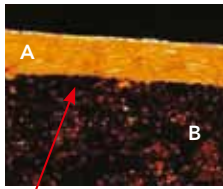
Posterior restoration with EQUIA

Dr. S. Lassocinski, Poland



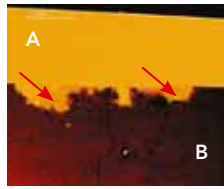
Unique

One single layer of EQUIA Coat not only protects your restoration against moisture contamination and acid erosion but also exponentially increases the physical properties of the EQUIA filling. This synergistic effect is only possible with EQUIA.



No delamination layer

A: EQUIA Coat; B: EQUIA Fil



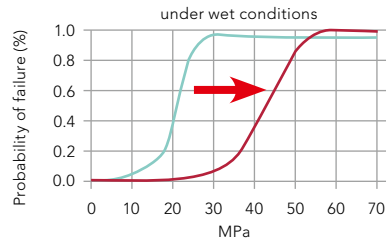
Intact interface: Porosities and surface irregularities are filled in*. Depth of penetration: 30-50 μ .

Dr. U. Lobhauer,
University of Erlangen,
Germany

In addition, EQUIA Coat forms an excellent marginal seal that protects the EQUIA filling against sensitivity, micro leakage and discolouration*.

When EQUIA Fil is coated with EQUIA Coat, markedly increased fracture toughness, flexural strength and flexural fatigue resistance are observed*. These improved physical properties result in long-lasting, fracture-resistant restorations that can withstand heavy occlusal loads.

Flexural Fatigue Resistance



Test performed by M. Braem,
Lab Dental Materials,
Antwerpen University, Belgium

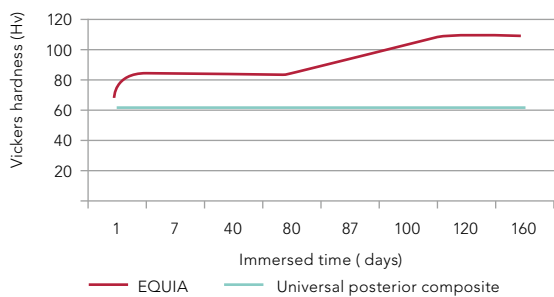
— EQUIA — High viscosity GIC
 An increased Flexural Fatigue Resistance is observed when EQUIA Coat is applied.

Intelligent

The coating is designed to wear off uniformly after several months. The EQUIA restoration undergoes a unique maturation effect attributed to saliva, which results in increased strength that is similar to universal posterior composites*.

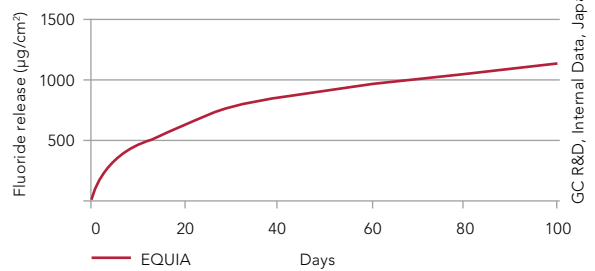
With its high fluoride release, EQUIA provides the much-needed protection against secondary caries as well as protection for adjacent teeth.

Hardness

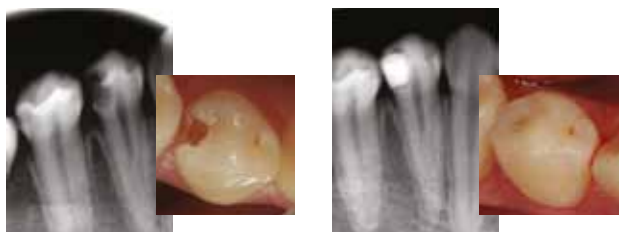


K. Kato et al., The Influence of Coating for the Maturation of Glass-Ionomer Cement, IADR 2006, abstract 2076

Fluoride release



GC R&D, Internal Data, Japan



Dr. J. Zalba, Spain

Due to its excellent radio-opacity, all restorations are clearly visible on X-rays.

EQUIA restorations - completed in just 3 minutes and 25 seconds!

EQUIA can be used in the following indications: Stress-bearing Class I, limited-size Class II, Class V and deciduous teeth restorations; root caries, repair of old restorations and core build-ups.



Standard cavity preparation.



Optional use of conditioner. Rinse thoroughly.



Quick, bulk placement of EQUIA Fil. Contouring after the initial setting.



Final finishing under water spray approx. 2'30" after start of mixing.



Application of EQUIA Coat. Light-curing for 20".



Excellent results in just 3'25".

Prof. Dr. K.H. Friedl,
Germany

What does Scientific Evidence has to say about EQUIA

The development of EQUIA was based on the positive feedback from years of clinical experience with high-viscosity GIC restorations, of which longevity has been highlighted again in recent systematic literature reviews*. On this basis, there is evidence that resin coating* improves the physical properties of the resultant EQUIA restoration. Numerous clinical studies, ongoing worldwide, are showing very promising results*:

- Clinical results indicate that EQUIA shows an excellent initial colour match*.
- When comparing against Micro-filled Composite resin over a period of 12 months, EQUIA was found to be as efficacious as the micro-filled composite resin system*.
- When evaluating about 150 restorations retrospectively after 2 years, it was concluded that EQUIA may be used as a permanent restoration material for any sized Class I and in smaller Class II cavities*.
- In yet another Clinical evaluation in about 245 patients over a period of 2 years, it has been concluded that EQUIA system seems to be a reliable choice for long-term dental restorations, even in load bearing teeth surfaces*.

*Data available on file and on <http://www.gceurope.com/goto/references>



The EQUIA system is available in a variety of combination packages, consisting of a bottle of 4 ml EQUIA Coat and capsules of EQUIA Fil delivered in the following Vita® shades: A1, A2, A3, A3.5, B1, B2, B3 and C4.

Vita® is a registered trademark of Vita Zahnfabrik, Bad Säckingen, Germany.

GC EUROPE N.V.
Head Office
Researchpark
Haasrode-Leuven 1240
B – 3001 Leuven
Tel. +32.16.74.10.00
Fax. +32.16.40.48.32
info@gceurope.com
<http://www.gceurope.com>

GC UNITED KINGDOM Ltd.
12-15 Coopers Court
Newport Pagnell
UK – Bucks. MK16 8JS
Tel. +44.1908.218.999
Fax. +49.1908.218.900
info@uk.gceurope.com
<http://uk.gceurope.com>

