

# What can Unifast III bring to YOUR practice?



Temporary crowns



Implant bridges

Laboratoire Dentaire Xavier Laly, Paris, France



Temporary bridges

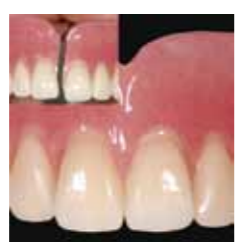


Closing of implant screw holes

Labo Andriessens, Bruxelles, Belgium



Temporary inlays



Denture repair



Gingiva reproduction



Dentures with attachments

CEKA / PRECH-LINE attachments



Unifast III		
Intro Pack, 2-1pkg, A2-A3		
A1, Powder 35g	A1, Powder 100g	
A2, Powder 35g	A2, Powder 100g	A2, Powder 300g
A3, Powder 35g	A3, Powder 100g	A3, Powder 300g
A3.5, Powder 35g	A3.5, Powder 100g	
B2, Powder 35g	B2, Powder 100g	
E3, Powder 35g	E3, Powder 100g	
Incisal, Powder 35g	Incisal, Powder 100g	Incisal, Powder 300g
Clear, Powder 35g	Clear, Powder 100g	
No.3 (Pink), Powder 35g	No.3 (Pink), Powder 100g	
No.8 (Pink Veined), Powder 35g	No.8 (Pink Veined), Powder 100g	No.8 (Pink Veined), Powder 300g
Liquid 40g (42ml)	Liquid 100g (104ml)	Liquid 250g (260ml)
Plastic Case	Disposable Dispensing Dish (50) No. 2	Brush No.10



Optiglaze  
Nanofilled Light Cured  
Protective Coating

15 ml liquid



G-Coat PLUS  
Nanofilled Self-Adhesive  
Light-Cured Protective Coating

4 ml liquid, 20 dispensing dishes  
50 micro-tips applicator & 1 applicator



Metal Primer II  
Adhesive for bonding  
dental acrylics and  
composites to metal

5 ml liquid, 1 brush

**GC EUROPE N.V.**  
Head Office  
Researchpark  
Haasrode-Leuven 1240  
Interleuvenlaan 33  
B - 3001 Leuven  
Tel. +32.16.74.10.00  
Fax. +32.16.40.48.32  
info@gceurope.com  
http://www.gceurope.com

**GC UNITED KINGDOM Ltd.**  
12-15, Coopers Court  
Newport Pagnell  
UK - Bucks. MK16 8JS  
Tel. +44.1908.218.999  
Fax. +44.1908.218.900  
info@uk.gceurope.com  
http://uk.gceurope.com

Top-class  
material, for  
more great  
masterpieces.  
Unifast III from GC.

The self-curing acrylic resin for long-term temporaries:  
crowns, bridges, inlays and repairs.  
A cost-efficient solution with superior aesthetics.

# Self-curing acrylic resin for temporary inlays, crowns, bridges & repairs.

Born from innovative thinking, the next generation of Unifast, an extremely popular product for more than 30 years, is now here. Unifast III – introduces the SURF Technology, a new and revolutionary polymer processing technology. Handling, physical properties and aesthetics have reached levels beyond expectation with powder liquid resins.

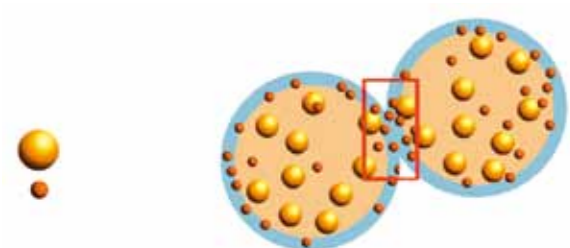
## SURF technology

Surface Uniformity Revolutionary Fixation Technology.

The new technology allowed GC to focus on developing a perfectly balanced composition that has unsurpassed adaptability, wear resistance, hardness and flexural strength without the need for additional filler. Until now this was the way to increase strength and wear resistance, but as this leaves part of the filler unreactive and unable to bind to the resin matrix, the result is not as aesthetically pleasing.

In developing the new SURF polymer processing technology, GC has not only overcome aesthetic limitations, it has created a resin that is highly resistant to discoloration. Thanks to "SURF technology" polymer particles are, for the first time, coated with pigment. This helps uniformly distribute polymer particles and pigment and guarantees a bubble-free and exceptionally even-coloured mixture. Unifast III guarantees long-lasting, even colour. This, combined with its superior physical properties make it an excellent choice for long-term implant temporaries.

Conventional technology



Unifast III SURF technology



..Polymer (SURF Technology)

The polymers are coated with pigments, enabling a uniform mixture.



Pictures of specimens

The specimens were made using a brush-on technique and observed through transmitted light. With conventional technology, the uneven colour can be seen on the boundary between each brush imprint, whereas Unifast III shows an exceptional even-coloured mixture.

# Superior handling for both brush-on and mixing technique!

## Mixing & pouring

Extremely easy to mix with liquid, Unifast III powders create non-sticky mixtures. A very comfortable working consistency and fast setting time also drastically improve handling.



## Brush on

Unifast III is suitable for fast and easy, basic, single shade temporaries or multilayer aesthetic long term temporaries. Picking up just the right amount of powder is simple – just dip the brush into the liquid. Thanks to the optimal thixotropic property, you can perform step-by-step applications and shape temporary restorations however you want. You can also control flowability by timing the application appropriately.



ZTM Bernd van der Heyd, Nürnberg Germany



Place immediately after dipping the brush... HIGH Flowability



Pause a little after dipping and then apply... LOW Flowability

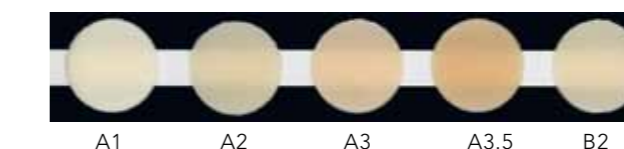
# Shade range

With Unifast III, temporary restorations can now create a clear, accurate simulation of how the final restoration will look. Patients today are attaching increased importance to this service as it makes them feel more comfortable about the procedure. Even better: it adds a layer of trust to your professional relationship.



To meet market demand, GC is offering Unifast III in a broad range of shades. Unifast III is available in several Dentine Vita\* based shades including Enamel and Incisal shades with optimal translucency to match the natural tooth for clinical cases which require higher level aesthetics. Brighter shades are also available for patients with bleached teeth.

SURF technology's strength is plain to see with the Clear shade that does not discolour over time. It's perfect for procedures such as splints which ideally should not be noticeable, or for emphasizing the base shades so you can use a multi-chromatic layering technique. Pink shades are designed for repairing cracked denture bases.



# Save time

To top it all off, GC has developed the finishing touch for this fast and easy build up technique: the coating agent Optiglaze. This provides an aesthetic glossy surface for all indirect restorations.



ZTM Bernd van der Heyd, Nürnberg Germany

So instead of mechanical polishing to achieve the final gloss – mainly using fine burs, polishing pastes etc – simply apply the coating after finishing with a brush, then light-cure it in a light-curing device for just three minutes.

This newly developed coating provides an aesthetic glossy surface similar to a final polish.

# Easy to use, easy to store and good for the environment.

The plastic organiser case contains refillable, spill-proof bottles for liquid and powder. All components have been developed with care for the environment in mind – from production to transport and use in the lab.



\* Vita® is a registered trademark of Vita® -Zahnfabrik Bad Säckingen, Germany